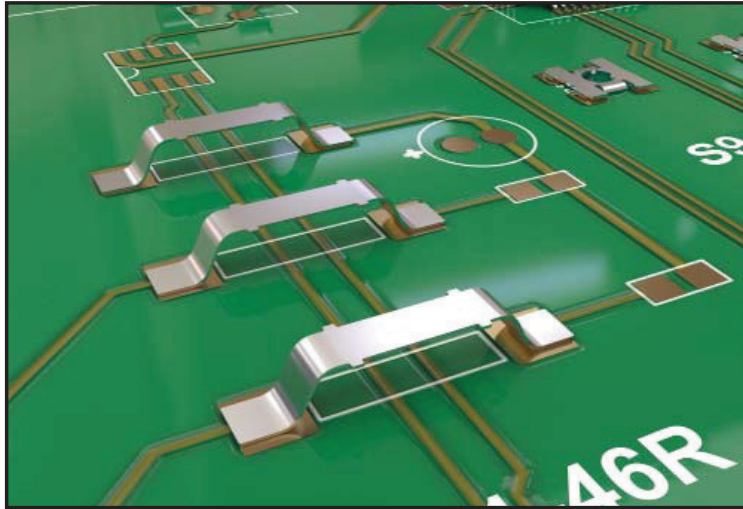


# HARWIN

## New Product Announcement



### EZ-Jumper Link

#### Features

- Low profile heights (S1621 = 1.8mm, S1731 = 2.54mm, S1911 = 0.97mm)
- SMT product is pick and placeable using standard SMT assembly machines
- Rated to 10 Amps electrical current
- Small footprint
- RoHS compliant

#### Benefits

- Autoplaceable - reducing assembly costs
- Easy solution when PCB track layout becomes more complicated
- Allows PCB designers to avoid moving from single to double layered PCB or double to multi layered construction